

iMindMap Quick Start Guide



CREATING YOUR FIRST MIND MAP

This guide is designed as a quick starting point for learning how to use iMindMap. Simply follow the basic step-by-step instructions to create your first Mind Map.

Step 1 - Central Idea/Theme

Using a central image to help represent your main goal or theme is a major factor in effective Mind Mapping.

(1.1) When you open iMindMap, select 'New Mind Map' from the Start Page.

(1.2) Select a Central Idea image from the library provided by selecting it and clicking Choose, or by double clicking on it. You can also use your own image by selecting Browse (see Fig 1 below).



Fig 1

(1.3) Your Central Idea Image will then be displayed in the centre of the screen. If you click on this you can then type your Central Idea text (see Fig 2 below).

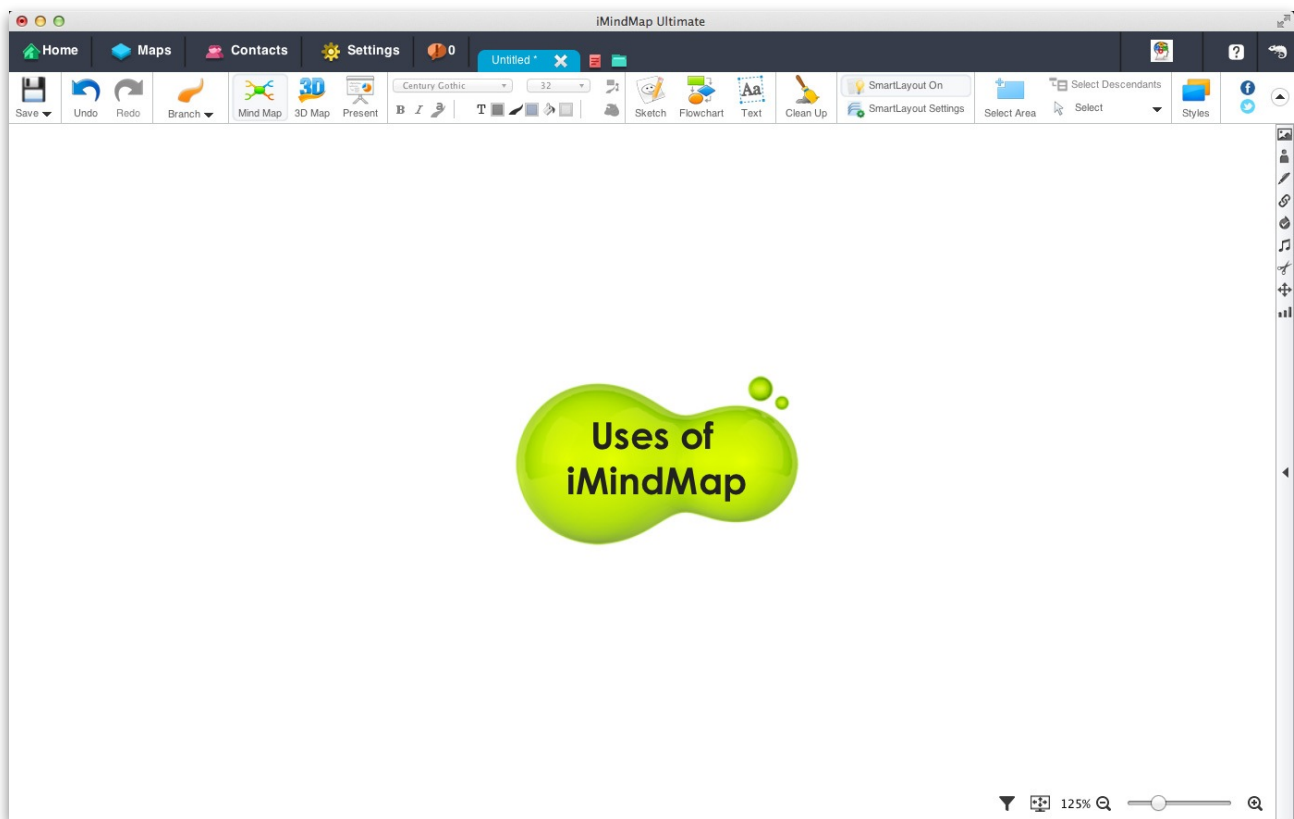


Fig 2

Note: The name that you give your Mind Map will automatically be adopted as the name of the iMindMap file. This has the extension .imx when saved. If you wish to use a different name for your file, go to File > Save As and amend your file name.

Step 2 – Main Branches

Now you are ready to add a series of primary ideas connected to your central theme. Your main branches represent your main ideas, the primary concepts or 'hooks' on which to hang all associated ideas.

(2.1) To create a main branch – Click over the red circle in the centre of the Central Image (which will appear when you hover your mouse pointer over the Central Image) and drag your mouse outwards until you achieve the desired branch length.

(2.2) To add a label/text to your branch – Immediately after creating your branch type your text and press Enter. It will then be automatically attached to the branch (see Fig 3 below).

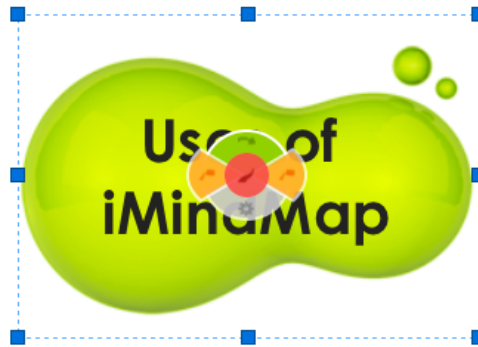


Fig 3

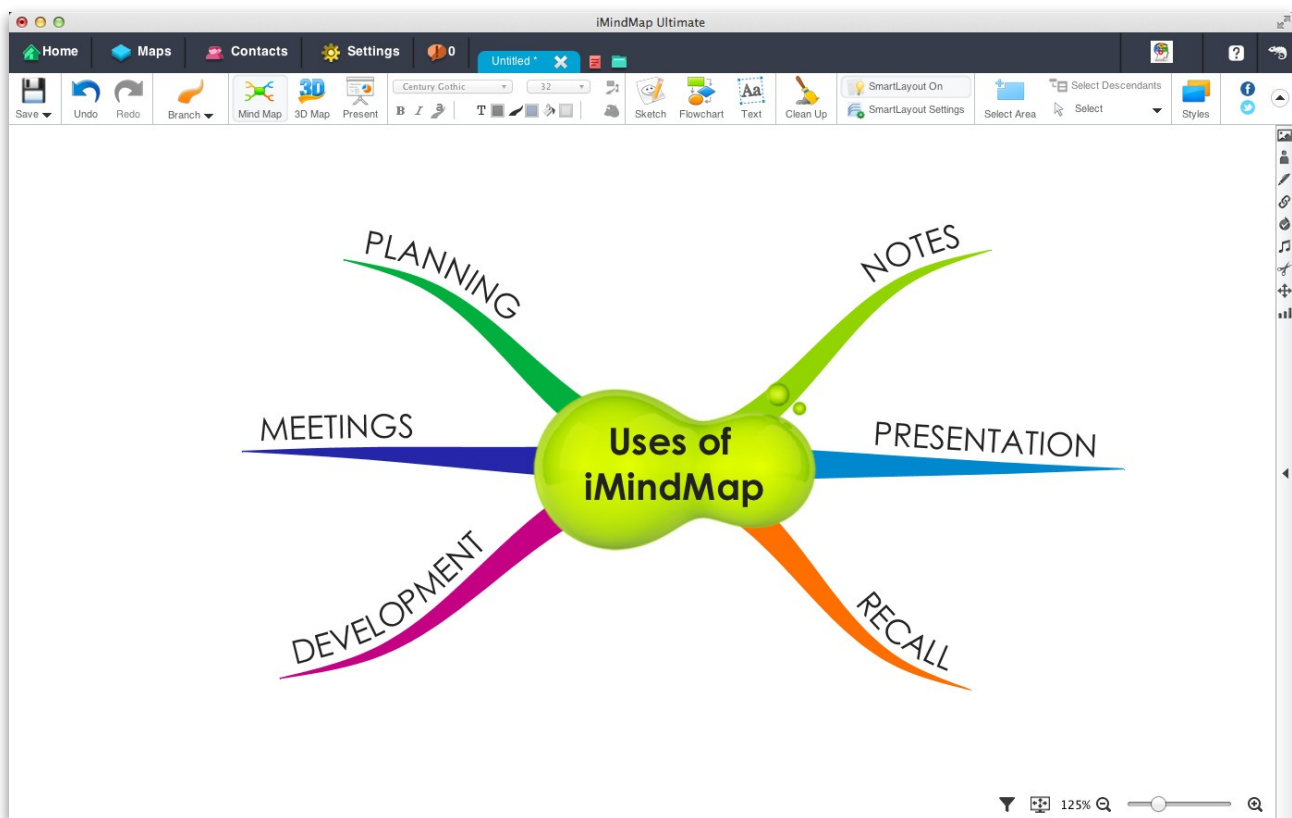
Tip: For effective Mind Mapping, try to only use one keyword per branch. A single word is better at triggering thoughts and aiding memory recall than phrases or sentences.

Now create as many branches as you like to represent your primary concepts. Please see example below(Fig 4).



Fig 4

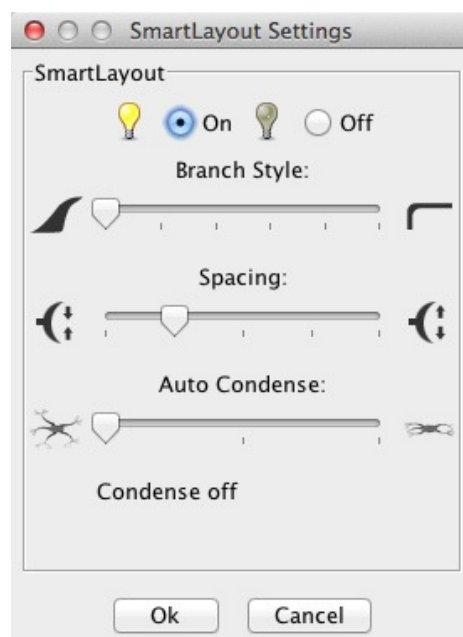
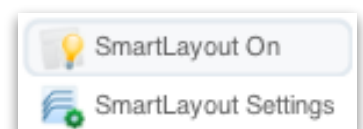
iMindMap also has an inbuilt feature known as 'SmartLayout'. The main purpose of this feature is to create iMindMaps in a quick and fast way.



SmartLayout Settings

The SmartLayout feature in iMindMap lets you create Mind Maps without having to worry about branches, text or images colliding or overlapping. SmartLayout is activated by default, and if any branches, text or images get within a certain distance from other branches, then the branches will adjust automatically to avoid overlapping.

On the main toolbar you can select 'SmartLayout Settings' which will allow you to turn SmartLayout on or off. This will arrange your map according the settings that are set within the SmartLayout Settings window.



You can also clean up your map so that any redundant white space is removed, branches are neatly organised and any objects are placed in optimum positions, by selecting the 'Clean Up' icon on the main toolbar.



The SmartLayout feature is also a great tool to use when you are making Mind Maps quickly using just your keyboard. Save time and move away from your mouse and let iMindMap's SmartLayout do the hard work so you can concentrate on generating ideas.

Insert child branch	Tab
Insert sibling branch	Enter
Insert child box branch	Shift + Tab
Insert sibling box branch	Shift + Enter
Navigation	Use Arrows keys

Styles

iMindMap features a selection of pre-set colours and Styles in order to speed up the customisation of you Mind Map. To use these quick and easy style sheets, click on 'Styles' icon on the main toolbar and the Styles window will appear - as shown below (Fig 5). You can scroll through additional pre-set styles, click 'Choose' in order to choose your style.

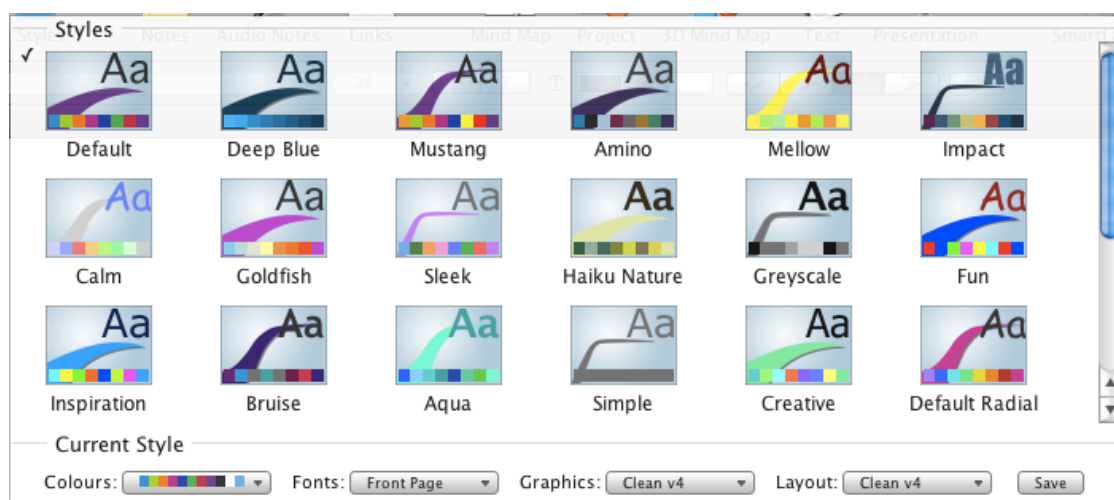
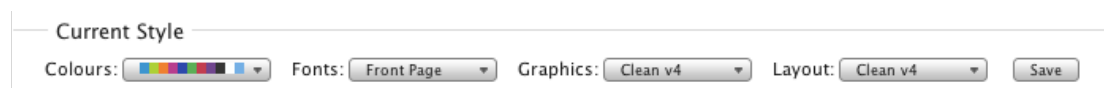


Fig 5

You can also create your own customised Styles within iMindMap. In order to do so, go to the Styles menu and click on the small arrow next the Colours, Graphics, Fonts and Layout buttons. From the drop down menus select 'Create New...':



After creating your own Style, you just need to select 'Save Style' in order to save it. Please then choose a name for your Style. Your new Style will now appear in the pre-set Styles section in the 'Styles' window and can be used by simply clicking on it within this window.

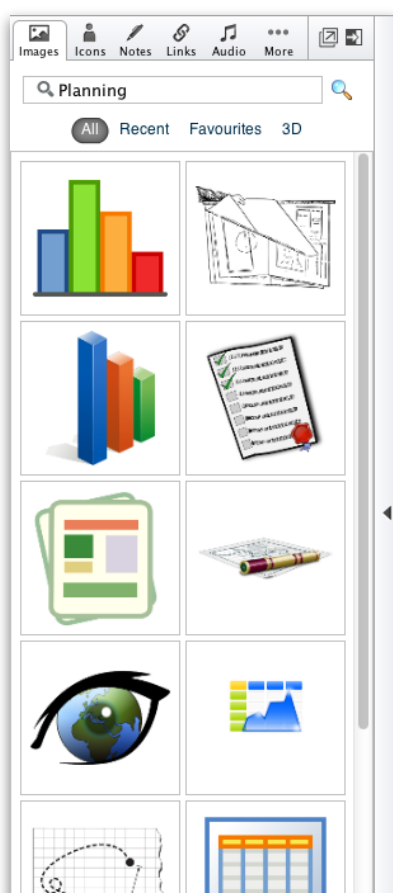
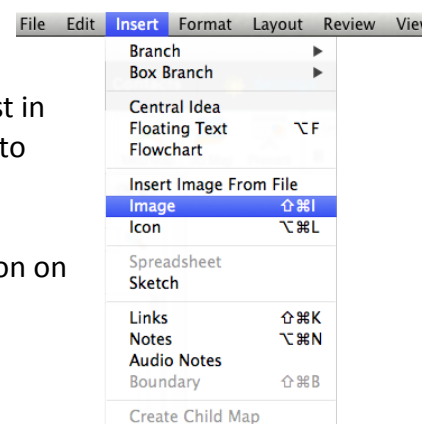
(2.3) Modifying or moving your branch

To modify or move your branches, click and drag your mouse over the blue section found on the outside of any Branch Target which appears when you point your mouse at the end of any branch. This is ideal for lengthening, shortening, raising or lowering branches.

Step 3 - Adding Images/Symbols to your Main Ideas

Using images and symbols when creating your main branches will assist in prompting your imagination and can aid memory through their ability to trigger associations in your mind.

(3.1) Image Library – To access the Image Library, click on the Insert icon on the main toolbar, and then select Image.



The Image Library will appear within the Inspector on the left-hand side of the screen.

The Image Library has a built-in search tool which requires you to type a word or phrase into the search bar. Once this is done, click on the magnifying glass icon to search. You will then be presented with a choice of images related to your search word or phrase.

(3.2) Icon Library – The Icon Library contains a diverse bank of icons which can be used in your Mind Map. The icons are classified into categories for easy navigation. To access the Icon Library, click on the Insert icon on the main toolbar, and then select Icon. The Icon Library will appear within the Inspector on the left hand side of the screen.

(3.3) Inserting an image from the Image and Icon Libraries

Inserting on to a branch – To attach the image or icon to a branch, you must first make the branch active before using the Image / Icon Library. With the branch selected, double click the image/icon you want to use and it will appear attached to the branch. (please see Fig 6 below).

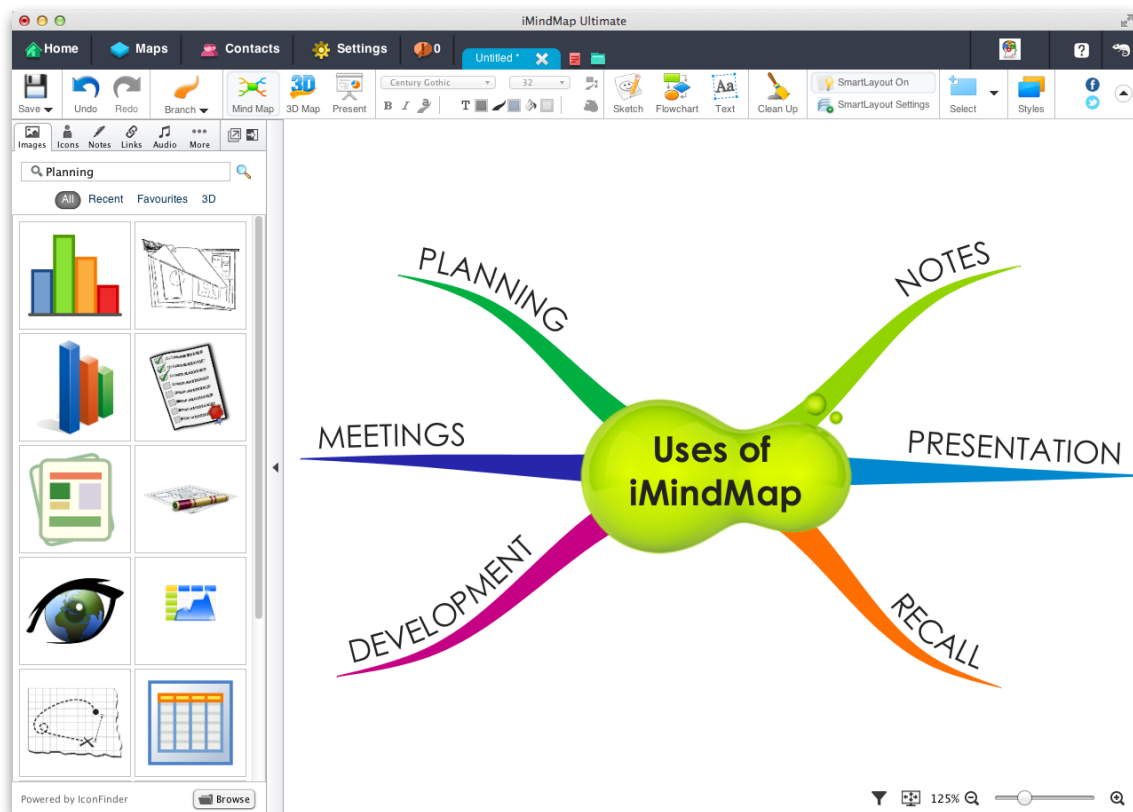


Fig 6

(3.4) Re-positioning an image - Your image can be clicked and dragged to any other position on your Mind Map.

(3.5) Re-sizing an image – To re-size an image, click on the image, then click and drag on any of the eight 'Grab Handles' that appear.

(3.6) Rotating an image - To rotate an image click and drag on the rotation tool which appears in the bottom right hand corner of the selected image.



Step 4 – Creating Child Branches

Now that your main branches are in place, your secondary and tertiary concepts can flow quickly and easily to facilitate a harmonious thought structure.



(4.1) Adding child branches

You can create child branches from your existing main branches by clicking and dragging from the red centre circle of a branch target that will appear when you point towards the end of a branch. iMindMap will automatically create thinner branches to characterise this next level of ideas and associations (see Fig 7 below). It is recommended that you:

- Use key words to develop and explain your main ideas.
- Again try and only use one word on each of your branches to help your mind spark off new ideas and thoughts – keep it simple.
- Keep exploring all of your main branches until you feel that you have added enough child branches to reflect all your next level of associations.

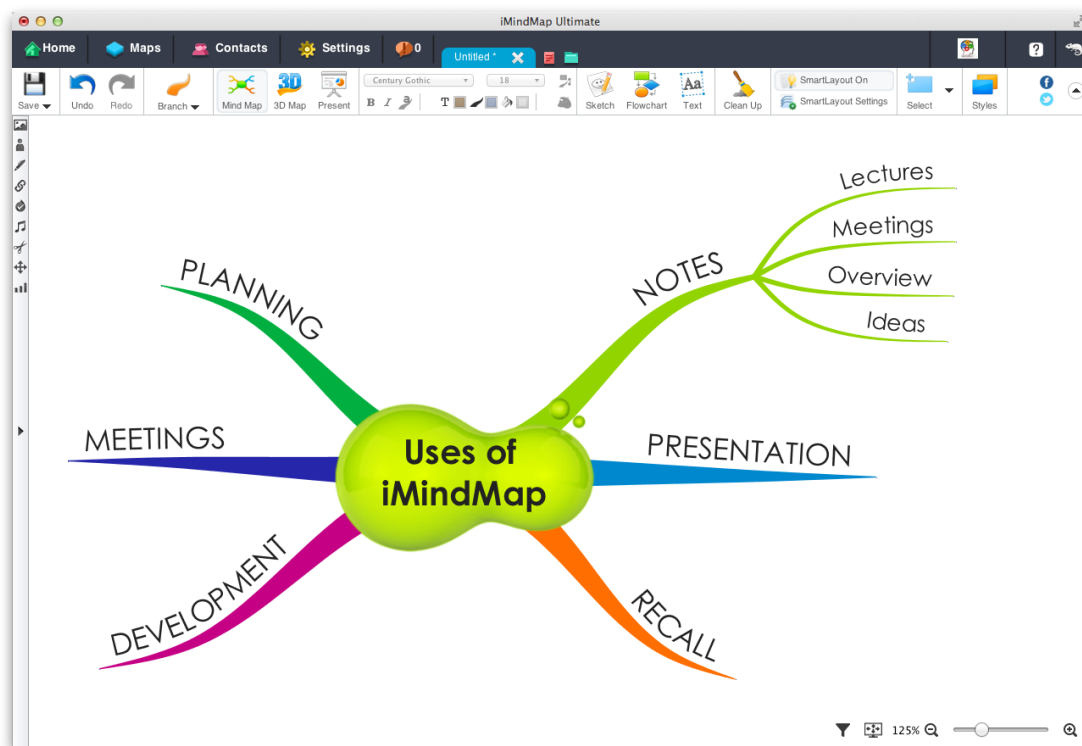


Fig. 7

- You can delve into your subject further by adding more sub-branches to your child branches to represent your tertiary thoughts and concepts and so on.

Tip: You can also create box branches by clicking and dragging the orange section found on the edge of any Branch Target, ideal for quotes / terminology / statistics. You can also include images in the boxes.



- Remember to include images and symbols where appropriate to engage your imagination, clarify topics and aid your memory.

Step 5 – Emphasising Relationships and Creating Boundaries

(5.1) Adding Relationships

There may be times when two concepts are related to each other even if one does not follow the other. To make connections within and across the branch pattern or between different maps on your workspace (if you have MultiMaps), you can use the Relationship feature.

To add Relationships:

- Select the Green section found on the edge of any Branch target and then click and drag to the related branch you wish to connect to.
- To add text to your Relationship, simply type when it is selected / active.
- When you release the mouse, your Relationship will appear connecting the two ideas.
- To modify the shape of the arrow, simply click and drag your mouse over the Control Points (blue or white circles) that appear inside the length of the Relationship. You can add more control points to make them more flexible by holding down the shift key and clicking on the spot where you want the new control point to appear. (delete info in brackets here)
- To change the colour of your Relationship, ensure the Relationship is selected and modify the colour using the Branch Colour Selector Tool on the main Tool bar.
- You can format your Relationship further by going to the Format tab and selecting Relationship.

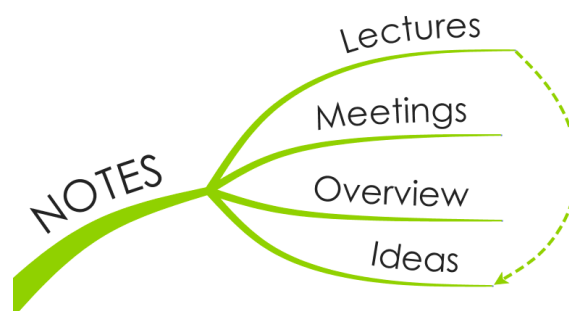


Fig. 8

(5.2) Adding Boundaries

Adding boundaries can make specific topics 'stand out' making them easier to remember and communicate to others. They also allow you to group ideas together with a visual boundary.

To add a Boundary:

- Ensure the branch topic that you want to add a Boundary to is selected.
- Under the Insert menu, select Boundary. A Boundary cloud will now surround your selected topic. Please see Fig 9 below.

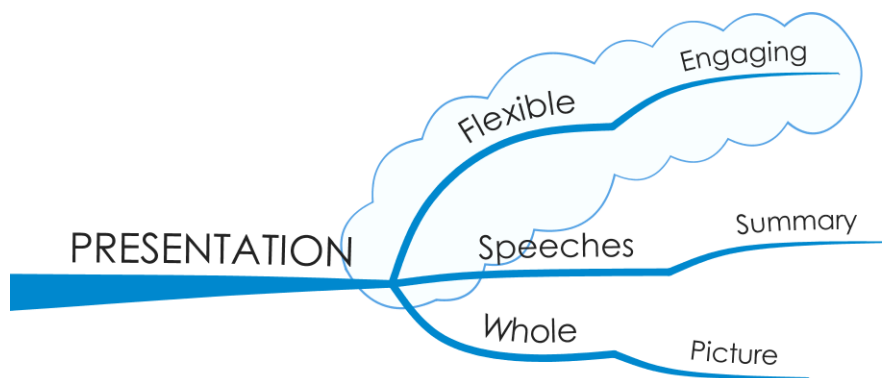


Fig. 9

- If you want to amend the colours and shape of your Boundary, make sure the branch the boundary surrounds is selected. Then double click within the Boundary. This will give you options to select fill and line colours as well as the options to adjust the Padding, Amplitude and Frequency of the Boundary. Make sure the branch that the Boundary is associated to is selected in order to make the options available.

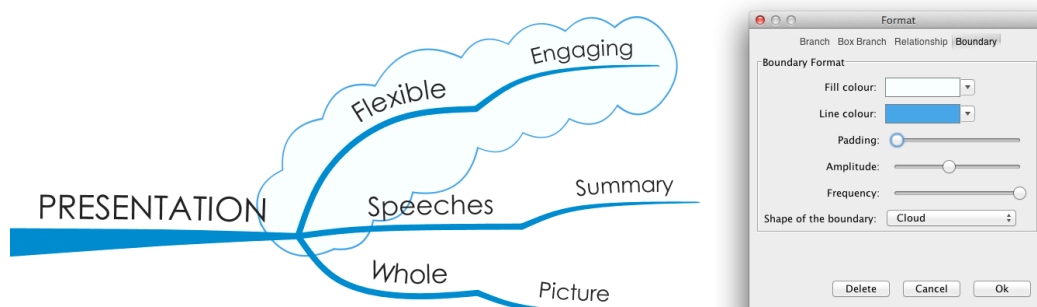


Fig. 10

Step 6 – Moving Branches via Drag and Drop

(6.1) Moving branches to new positions using drag and drop

To move branches to new positions select the branch you wish to move and whilst holding mouse button down drag to the desired branch. When you can insert the branch onto a new branch you will see a small greyed out silhouette of the branch locking onto the end of the new branch as seen in Fig 11 below.

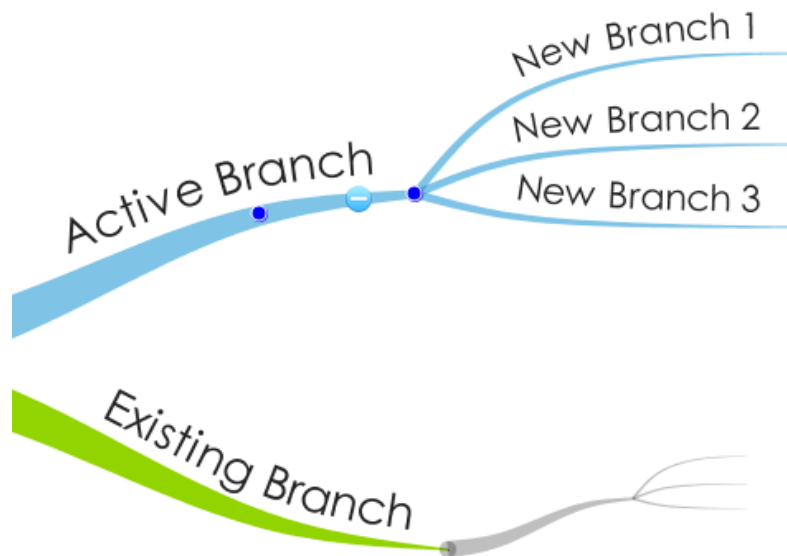


Fig. 11

The branch and its child branches will then be moved. Please note: when moving branches or cutting and pasting branches iMindMap will automatically flip the branches so that they continue to have the same structure but they also follow the correct direction of their new parent branch.


SmartLayout will ensure that any branches that are moved do not collide or overlap with any other branches, text or images.


Step 7 – Inserting Information

To further explain and explore specific concepts, you may wish to link files, hyperlinks or notes to some of your branches. These can be accessed for reference purposes at any time.

(7.1) Attaching files and links

To attach a link to a branch, ensure the branch you want the link to appear on is selected, then click on the Insert tab on the main toolbar and then select Link. Alternatively, you can right click on the branch and select Insert > Insert Link. The Hyperlink side panel will now appear to the right of the screen.

You can add a link to a file by selecting the Folder icon  and locating the file.

You can add a link to a website by clicking on the Chain icon  and entering the URL in to the box.

(7.2) Adding Text Notes

You may want to assign a comment or note to a topic without it being immediately visible on your map so as to avoid clutter. Use the 'Notes Editor' for this:



Notes Editor – iMindMap 7 includes a word processor that will allow you to add notes to your branches. Ensure the branch you want to attach the note to is selected. Then, simply click on the Notes icon on the main tool bar. The Inspector will open up to the left of the screen for you to enter your notes (Fig 12).

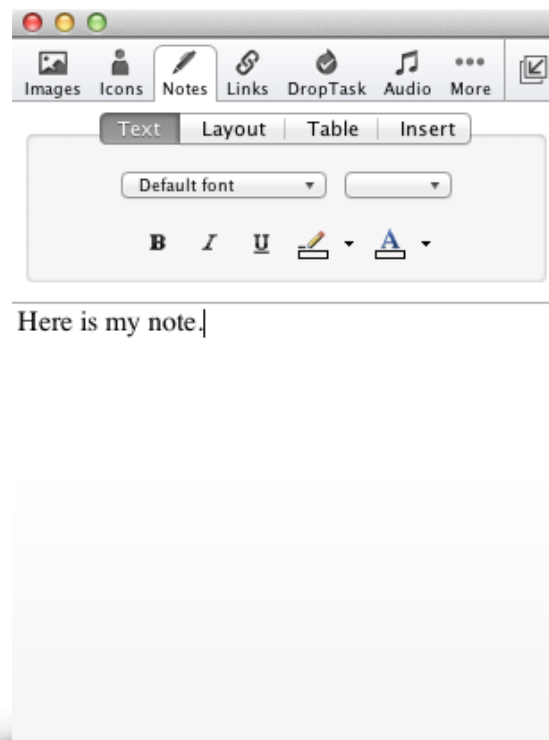


Fig. 12

(7.3) MultiMaps

You can insert a number of different Mind Maps onto your workspace. This feature allows you to have multiple central ideas which you link together and connect if you should wish, see Fig. 13.

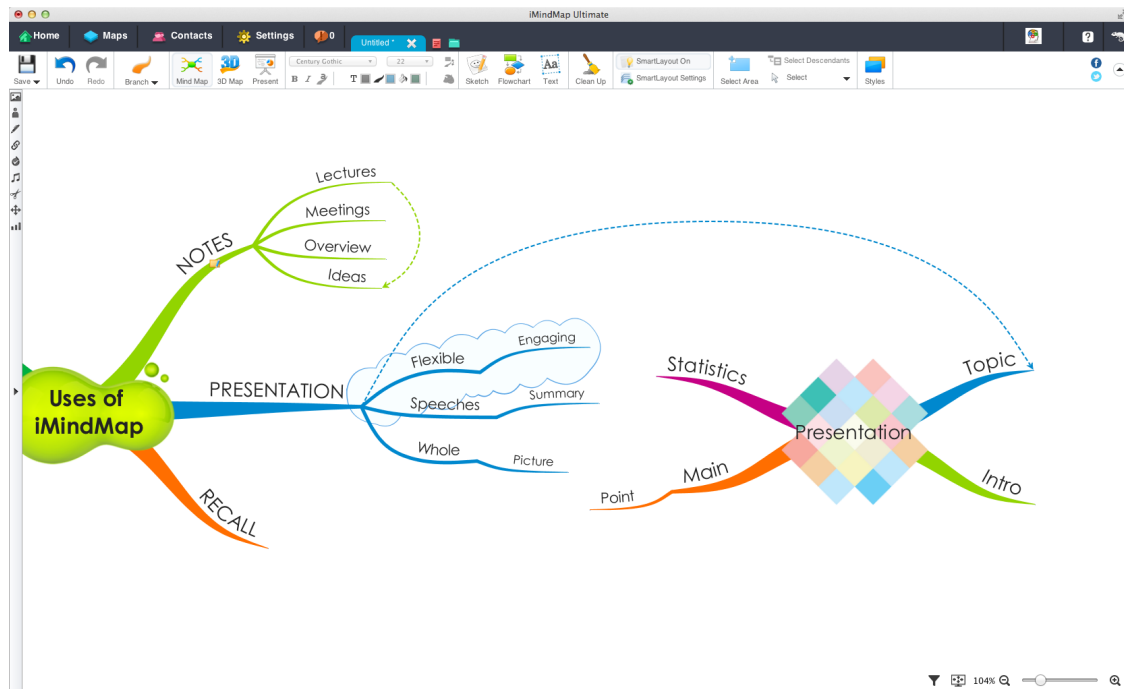


Fig. 13

This is a really useful tool to use when you want to connect lots of ideas or if your Mind Map is getting big, you can create another main idea instead of making lots of child branches.

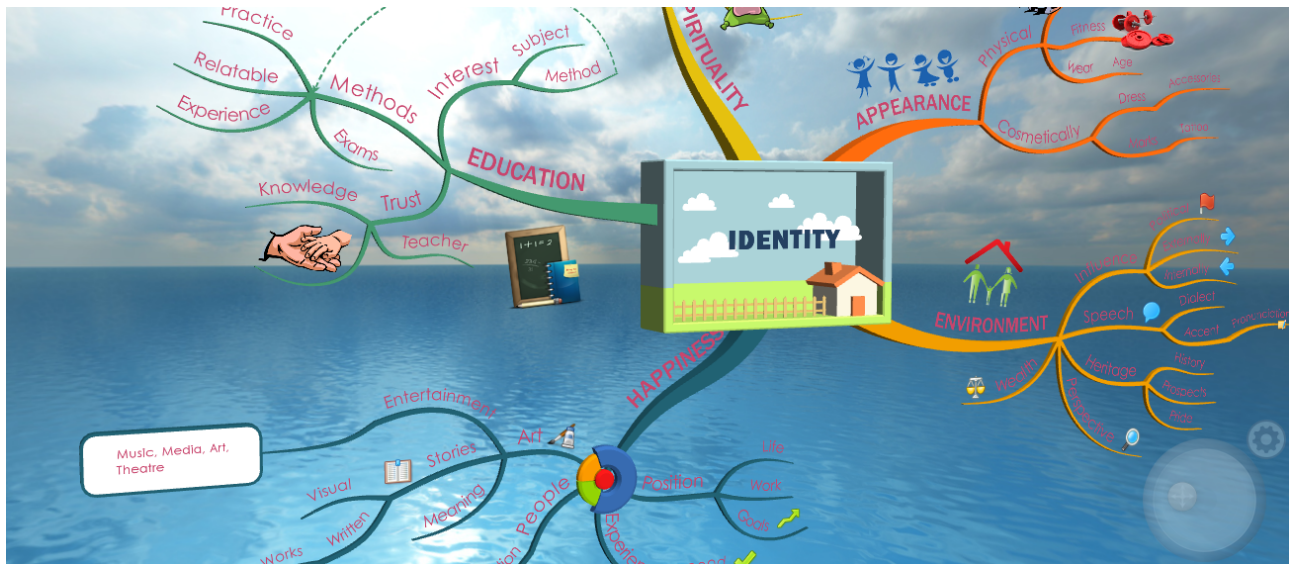
It can also help you to make it visually clearer and easier to make connections between ideas as you can create relationship arrows from a branch of one central idea to a branch of another one.

To create another central idea you can:

- Click on the Insert icon and select Idea.

Step 8 – Viewing your Mind Map in 3D

3D View offers a completely new way to capture ideas and present. The world's first 3D Mind Map view takes your Mind Map and turns it into a 3 dimensional object, allowing you to glide around it from different angles, zoom in on different areas and turn Mind Mapping into a whole new experience.



To enter 3D Map View, click on the 3D Map icon on the main tool bar.

The real beauty of 3D View is the easy navigation. You can use your keyboard arrow keys, the simple 3D Control Panel (in the bottom right hand corner of your workspace) or even your mouse. You should notice that iMindMap gracefully animates as you pan around your workspace, zooming in at any angle.

You can also draw branches in 3D View using the Branch target as found in 2D view.

Keyboard Arrows: This will allow you to jump from one branch to another easily. This zooms in on the active branch, giving the branch focus.

Step 9 – Exporting your Mind Map

There are several export options within iMindMap, giving you choice in how you want to share and transport your Mind Map. These include:

- Exporting as an image file (JPG, PNG and PDF formats)
- Exporting to an SVG
- Exporting as a PDF & Document
- Exporting as a Web Page

- Export as a Spreadsheet
- Export as a Presentation
- Export to Microsoft Project
- Export Audio Notes
- Export to OPML, Pack and Go

The Export Menu can be accessed by clicking on the File menu and then selecting 'Export'. From there, the list of export options will appear for you to select.

Note: The Export features are limited for different iMindMap Editions

Step 10 – Printing and Saving your Mind Map

(10.1) Printing

You can print your active Mind Map by selecting Print located under the File menu. From here you can choose the number of copies you want to print and which printer to use. You can also choose whether you want to print the full map, just the central ideas, or just the main branches. You may also choose other options such as page layout i.e. portrait or landscape as well as scaling options.

(10.2) Saving

Remember to save your Mind Map before exiting iMindMap.

- To Save, select 'Save' under the File menu.
- If necessary, select the folder in which you want to save the document.
- Click 'Save'

Note: All iMindMap documents are automatically saved with the extension '.imx'.

Why not watch our [video tutorials](#) for a more detailed look at iMindMap and its features?